



markem·imaje

a **DOVER** company



5-Watt UV laser coder

SmartLase[®] UV500

Ultra Powerful. Ultra Fast. Ultra Flexible.

UV laser technology is the perfect solution for challenging materials

The SmartLase® UV500 delivers the most precise, high-quality coding with the added benefit of minimal heat transfer. This leaves the substrate surface integrity intact—perfectly suited for high-density and delicate materials.

Benefit from exceptional performance in high-speed applications with the added value of solvent-free, chemical-free, permanent markings—even complex 2D codes. All with the Markem-Imaje signature reliability, ease of integration and operation.

- High definition, chemical-free and permanent coding on the most challenging substrates
- Lower operating expenses (OpEx) thanks to less maintenance and fewer line stoppages
- Industry 4.0 ready—enabling advanced packaging intelligence
- Compact, safe and powerful

Ultra powerful, ultra fast, and ideal for high-density and delicate materials

Standard Markem-Imaje laser accessories

Encoder, sensors, beacon towers, fume extractors, etc.

Industry 4.0 ready

Supports industrial interfaces such as Ethernet/IP, PROFINET, NGPCL and full-featured CoLOS® software support

Industrial grade

Controller (IP54)
Printhead (IP52/IP55)

Lens options for D8 90°

150x150 mm
FL: 250 mm/WD: 342 mm
330x330 mm
FL: 511 mm/WD: 652 mm

Powerful and fast

High-speed 5-Watt UV laser printhead

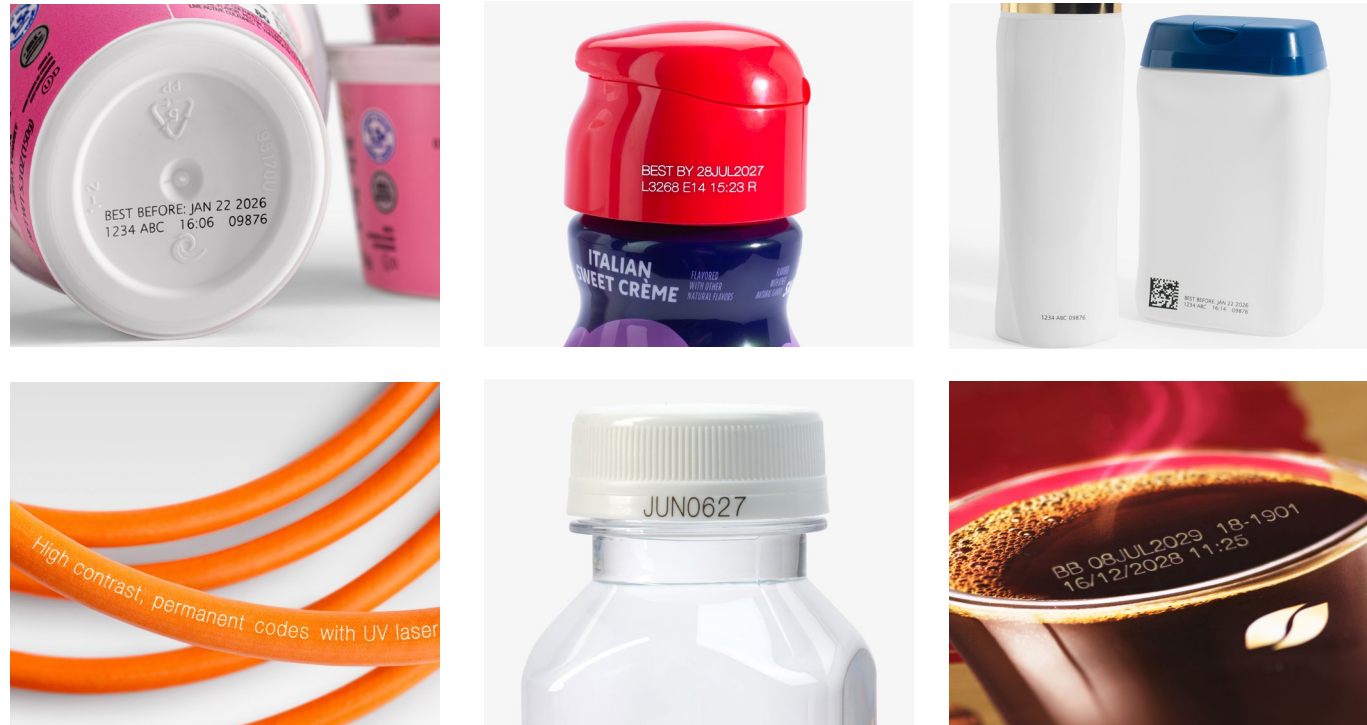
10" (250 mm) touch screen

User interface (IP66)



Applications

Markem-Imaje is committed to helping you achieve the best quality codes for your specific application. We provide sample print testing that considers your code, content, line speed and substrate to ensure you have the laser wavelength, power and lens solution 'just right'.



The SmartLase® UV500 is perfectly suited for high-quality marking on a wide range of substrates, including:

Food and beverage: HDPE, PP, PE containers and caps, monomaterial and laminated flexible packaging, laminated boxes and pouches, glass (decorative marking)

Cosmetics and household: HDPE, PP, PE, BOPP containers, monomaterial and laminated flexible packaging

Pharma and medical: Transparent, white, and coloured polymers, ABS, woven textiles (masks), medical pills (direct printing on tablets), silicone tubing, HDPE, stainless steel (medical instruments), polycarbonate (protective glasses), aseptic packaging, blister packs, PP containers, packaging and protective films, glass

Electronics: Wire jackets, steel and copper surfaces, silicon wafers, polymer electronic chip housing, nickel plating, polycarbonate, epoxy

Automotive: PA, glass, epoxy, PP, liquid-crystal polymers, PBT

Industrial: Extruded or moulded polymers, rubber

5-Watt UV laser coder The SmartLase® UV500

High-definition, damage-resistant, permanent codes

- Our unique combination of a proprietary marking algorithm, a high-speed digital scanning head and the fine laser beam provides ultra-fast and high-quality marking
- Minimal to no interference with material integrity.
- Protection against counterfeiting with permanent laser marking.

Lower OpEx, higher efficiency and chemical-free

- No consumables needed.
- Virtually maintenance-free.
- Higher reliability means **higher productivity** and fewer line stoppages.
- Clean and compliant production supports your sustainability goals by eliminating chemical components.

Industry 4.0 ready, reliable and safe

- Industry 4.0 optimised with industrial interfaces such as Ethernet/IP, PROFINET, NGPCL and full-featured support for CoLOS® software enabling seamless integration with complex plant automation and manufacturing execution systems (MES).
- Adoptable to challenging manufacturing environments with **IP52 and IP55 approved** marking units.
- Meets the **highest standard of safety** for E-stop and interlock circuits integration per ISO 13849-1 up to PLe.
- Easy integration into modern production lines.





Intelligent solutions to connect and protect your products

We provide producers and machine manufacturers worldwide with a one-stop shop of innovative smart product identification, packaging intelligence and connected product solutions to unlock the power of intelligence in codes. By seamlessly integrating the most comprehensive range of proprietary coding technologies with software, services and certified consumables, we empower our customers with the right information across the supply chain—keeping products and consumers safe and connected—this is intelligence, beyond the mark. Our Connected Product solutions yield proven software applications to support our customers from simple code and message design, through code and packaging validation, to traceability, authentication and digital, connected product experiences, created for consumer engagement:

- Make production lines more efficient and reliable
- Achieve critical sustainability and compliance objectives
- Connect, protect and track products across the supply chain
- Strengthen consumer confidence in your brand

Markem-Imaje reliability and service support

Markem-Imaje ensures peace of mind with our comprehensive service portfolio. Our global team of technical experts is here to help you increase production output, reduce downtime and optimise printer performance—from startup and training through upkeep and repairs.

We are committed to providing the best customer service and support possible, using the method that's most convenient for you.



Online and remote expert resources

Quickly recover from unexpected technical and mechanical issues with live helpdesk support including remote video capabilities

Resolve technical issues yourself anytime with the help of our AI-powered Virtual Assistant



On-demand consumables, repairs and spares

Plan ahead with consumable and maintenance agreements tailored to meet your business needs

Order and track spare parts and consumables as you need them with our online portal



Personalised, scalable rental programme

Design a turnkey coding solution that perfectly fits your unique needs with our flexible rental programme, giving you cost predictability



Packaging Operations

Distribution

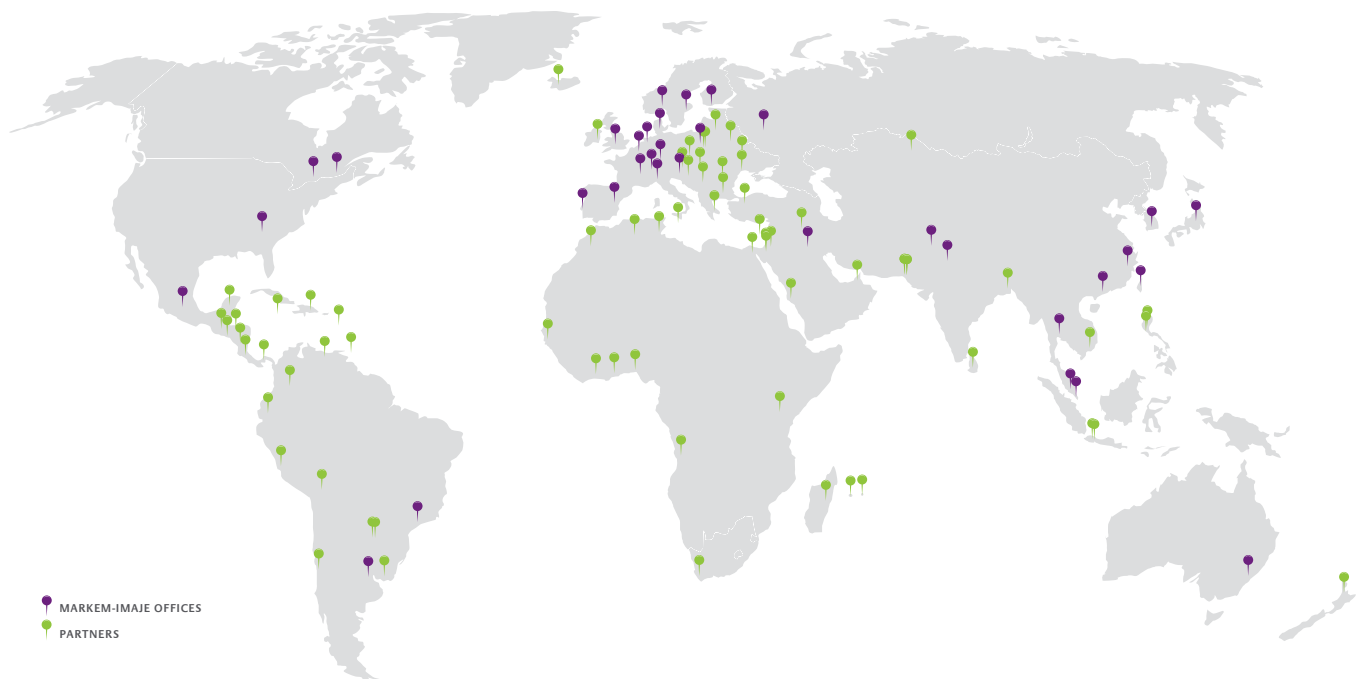
Point of Sale

Consumer

About Markem-Imaje

Markem-Imaje, a wholly owned subsidiary of Dover Corporation, connects products and protects brands through intelligent identification, traceability and consumer engagement solutions. We offer the industry's most comprehensive range of marking and coding systems seamlessly integrated with trusted software, services and consumables. Over 50,000 customers worldwide partner with us to help them unlock the power of information in codes.

With decades of proven expertise provided through the most extensive global network, we empower our customers to optimise supply chain efficiencies, achieve sustainability and compliance objectives, keep products safe and engage their consumers. This is intelligence, beyond the mark.



9 Markem-Imaje Ltd
4th Floor, Centenary House
1 Centenary Way
Manchester M50 1RF
United Kingdom

Tel: 0161 864 8100

www.markem-imaje.co.uk



We reserve the right to amend the design and/or specifications of our products without notice.
© 2024 Markem-Imaje, a Dover Company. MARKEM-IMAJE and the MI MARKEM-IMAJE Logo and SMARTLASE are registered trademarks of Dover Europe Sàrl in the United States, the European Union and various other countries.
Photos: Al Karevy Photography Ltd, ginko-photo.com - A1